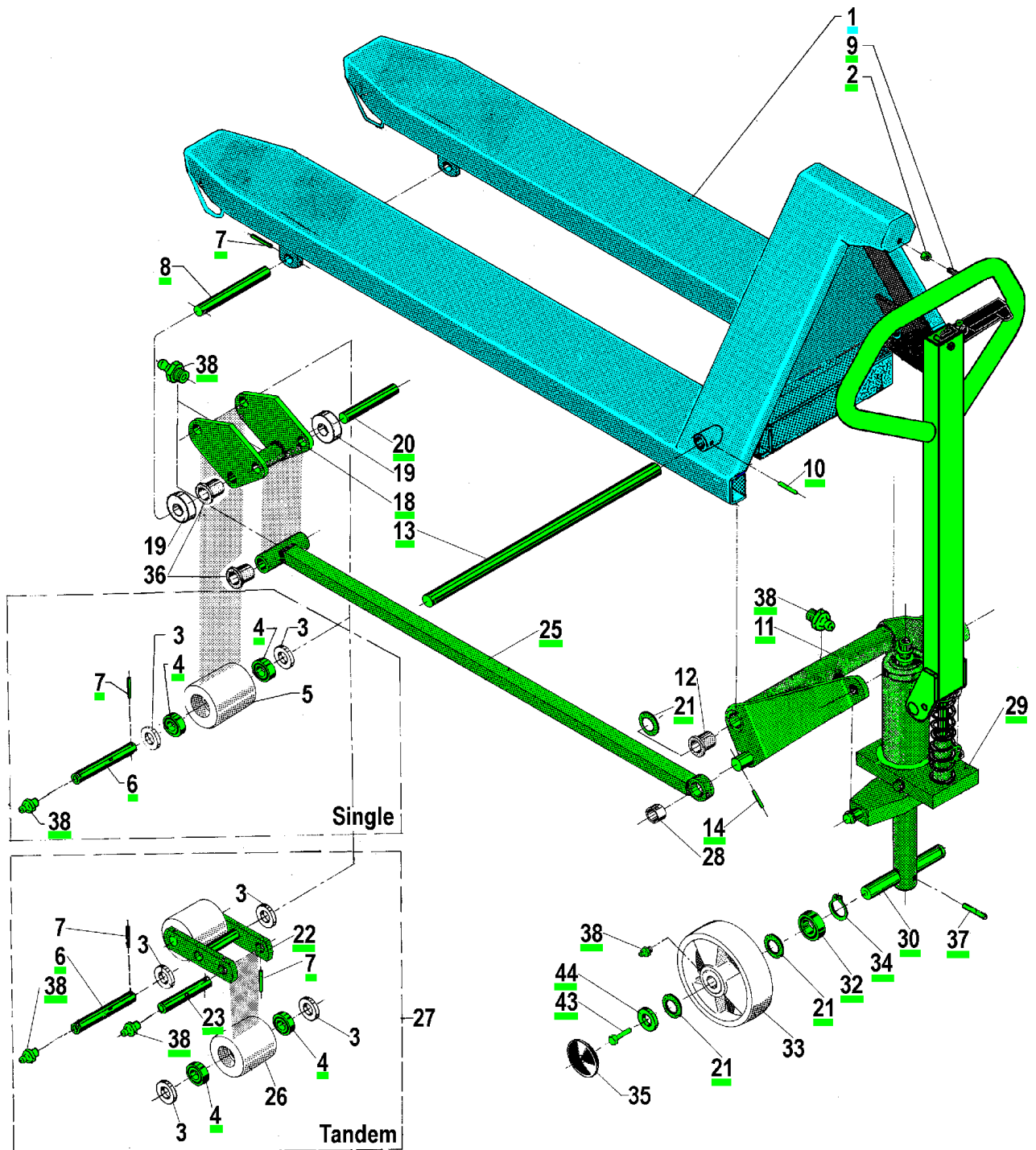


# GL 2081RF-PLUS

# - Chassis

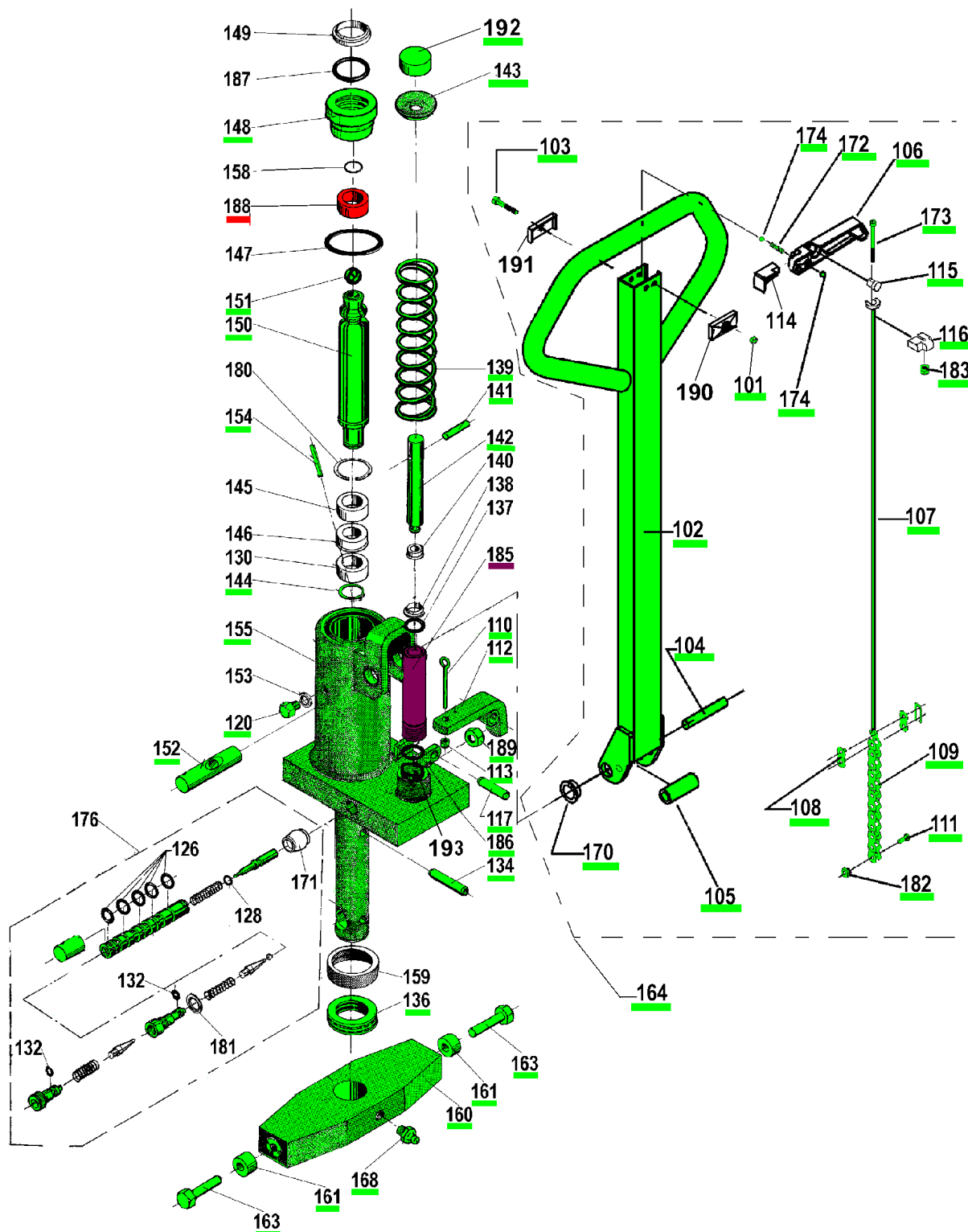


<span style="background-color: cyan;"> </span>	Syrefast	Inox AISI 316/329	1.4401 (V4A)	Inox AISI 316/329 - Anti acides
<span style="background-color: green;"> </span>	Rustfri	Inox 303/304	1.4301/1.4305 (V2A)	Inox AISI 303/304
<span style="background-color: yellow;"> </span>	Varm galvaniseret	Hot galvanized	Feuerverzinkt	Galvanisé à chaud
<span style="background-color: red;"> </span>	Gulkromatiseret	Yellow chromate	Verz. und gelbchromatiert	IBichromaté jaune
<span style="background-color: orange;"> </span>	Gummitætnelejer	Rubber sealed bearings	Lager m/Gummidichtung	Roulements étanches au caoutchouc
<span style="background-color: purple;"> </span>	Bronze	Bronze	Bronze	Bronze

Spare Parts List		Chassis			19-06-2006	
Pos.	Part no.	Benævnelse	Description	Benennung	Pcs.	Mat. Spec.
1	200057-1 200006	Chassis RF 520X1140 Chassis RF 680X1140	Chassis RF 520X1140 Chassis RF 680X1140	Chassis RF 520X1140 Chassis RF 680X1140	1	Stainless
2	927080	Møtrik RF	Nut RF	Mutter RF	1	Stainless
3	400159	Afstandsør	Spacer pipe	Abstandsrohr	4	Plastic
4	947242	Kugleleje RF	Ball bearing RF	Kugellager RF	4	Rubber sealed
5	4015771 401453	Gaffelhjul nylon hvid Ø80 Gaffelhjul polyurethan Ø80	Fork wheel nylon white Ø80 Fork wheel polyurethane Ø80	Gabelrolle, Nylon weiss, Ø80 Gabelrolle Polyurethan Ø80	2	
6	402518	Hjulaksel RF	Wheel axle RF	Radachse RF	2	Stainless
7	937440	Rørstift RF	Tubular pin RF	Rohrstift, RF	4	Stainless
8	400156	Hjulgaffelaksel RF	Fork wheel axle, RF	Radgabelachse, RF	2	Stainless
9	917825	Skrue RF	Screw RF	Schraube RF	1	Stainless
10	937530	Rørstift RF	Tubular pin RF	Rohrstift RF	1	Stainless
11	400100 401260	Vippearm kpl. 520 RF Vippearm kpl. 680 RF	Lifting arm 520 cpl. RF Lifting arm cpl. 680 RF	Schwinge Kpl. 520 RF Schwinge Kpl. 680 RF	1	Stainless
12	948259	Bøsning	Bushing	Buchse	2	Nylon
13	400160	Tværaaksel 520 RF	Axle 520 RF	Welle 520 RF	1	Stainless
14	937530	Rørstift RF	Tubular pin RF	Rohrstift RF	2	Stainless
18	400151	Hjulgaffel RF	Wheel fork RF	Radgabel RF	2	Stainless
19	400173	Rulle nylon	Nylon roll	Nylonrolle	4	Nylon
20	400158	Aksel for trykstang RF	Axle for push rod RF	Achse für Druckstange RF	2	Stainless
21	402449	Afstandsring nylon	Spacer ring nylon	Abstandsring Nylon	2	Stainless
22	400146	Tandemgaffel kpl. RF	Tandem fork cpl. RF	Tandem Radgabel Kpl. RF	2	Stainless
23	400163	Tandemaksel RF	Tandem axle, RF	Tandem Achse, RF	4	Stainless
25	400149	Trykstang 1140 RF	Push rod 1140 RF	Druckstange 1140 RF	2	Stainless
26	401455 4020811	Tandemhjul polyurethan Ø80 Tandemhjul nylon hvid Ø80	Tandem wheel poly. Ø80 Tandem wheel Nylon White Ø80	Tandemrolle Poly. Ø80 Tandem Nylon Weiss Ø80	4	
27	300244 300243	Tandem kpl. polyurethan RF Tandem kpl. nylon RF	Tandem cpl. poly. RF Tandem cpl. nylon, RF	Tandem Kpl. Polyurethan RF Tandem Kpl. Nylon RF	2	
28	401768	Bøsning RF	Bushing RF	Buchse RF	2	
29	101001	Pumpe kpl. m/håndtag RF	Pump cpl. RF w/handle	Pumpe Kpl. m/Deichsel RF	1	
30	400224	Styrehjulsaksel RF	Steering wheel axle RF	Lenkradachse RF	1	Stainless
32	947252	Kugleleje RF	Ball bearing RF	Kugellager RF	4	Rubber sealed
33	4039031 300087	Styrehjul nylon hvid Ø200 Styrehjul polyurethan Ø200	Steering wheel nyl. white Ø200 Steering wheel poly. Ø200	Lenkrad, Nylon Weiss Ø200 Lenkrad Poly. Ø200	2	
34	933251	Låsering RF	Circlip RF	Schliessring RF	2	Stainless
35	944201	Hjulkapsel	Hub cap	Radkappe	2	
36	400030	Bøsning f/hjulgaffel	Bushing for wheel fork	Buchse f. Radgabel	8	Nylon
37	937140	Rørstift RF	Pipe pin RF	Spannhülse RF	1	Stainless
38	990112	Smørenippel RF	Lubricator nipple RF	Schmiernippel RF	7	Stainless
43	917125	Sætskrue RF	Screw RF	Schraube RF	2	Stainless
44	928101	Skærmskive	Washer	Scheibe	2	Stainless

# GL2081RF-PLUS

## - pumpe & håndtag



<span style="background-color: #0070C0; color: white; padding: 2px;"> </span>	Syrefast	Inox AISI 316/329	1.4401 (V4A)	Inox AISI 316/329 - Anti acides
<span style="background-color: #008000; color: white; padding: 2px;"> </span>	Rustfri	Inox 303/304	1.4301/1.4305 (V2A)	Inox AISI 303/304
<span style="background-color: #FFD700; color: white; padding: 2px;"> </span>	Varm galvaniseret	Hot galvanized	Feuerverzinkt	Galvanisé à chaud
<span style="background-color: #FF0000; color: white; padding: 2px;"> </span>	Gulkromatiseret	Yellow chromate	Verz. und gelbchromatiert	IBichromaté jaune
<span style="background-color: #FF8C00; color: white; padding: 2px;"> </span>	Gummitætnelejer	Rubber sealed bearings	Lager m/Gummidichtung	Roulements étanches au caoutchouc
<span style="background-color: #800080; color: white; padding: 2px;"> </span>	Bronze	Bronze	Bronze	Bronze

Spare Parts List		The hydraulic unit			01-06-2006	
Pos.	Part no.	Benævnelse	Description	Benennung	Pcs.	Mat. Spec.
101	927060	Sikringsmøtrik	Lock nut	Gegenmutter	1	Stainless
102	403713	Håndtag kpl. RF	Handle cpl. RF	Deichsel Kpl. RF	1	Stainless
103	917641	Skrue RF	Screw RF	Schraube RF	1	Stainless
104	400091	Aksel RF	Axle RF	Achse RF	1	Stainless
105	400959	Håndtagsrulle RF	Roll for handle RF	Rolle f/Deichsel RF	1	Stainless
106	415055	Udløserhåndtag	Release lever	Auslösehandgriff	1	Stainless
107	403715	Udløserstang RF	Release rod RF	Auslösestange RF	1	Stainless
108	951010	Kædesamler RF	Chain connector RF	Kettensammler RF	1	Stainless
109	951013	Kæde RF	Chain RF	Kette RF	1	Stainless
110+	917540	Øjeskrue RF	Eye bolt RF	Augenbolzen RF	1	Stainless
111	917412	Skrue RF	Screw RF	Schraube RF	1	Stainless
112+	400963	Udløserarm RF	Release arm RF	Auslösearm RF	1	Stainless
113+	927050	Sikringsmøtrik	Lock nut	Gegenmutter	1	Stainless
114	415066	Håndtagstop center	Top for handle, centre	Top für Deichsel, Center	1	
115	415056	Plasttap	Plastic pin	Kunststoff-Zapfen	1	Plastic
116	415059	Justeringsbrik	Adjusting pin	Justierungsstift	1	Plastic
117+	937136	Rørstift RF	Pipe pin RF	Spannhülse RF	1	Stainless
120+	917112	Skrue RF	Screw RF	Schraube RF	1	Stainless
126+*	900110	O-ring	O-ring	O-Ring	5	
128+*	900050	O-ring	O-ring	O-Ring	1	
130+	402466	Bronzestempel	Copper piston	Kupferkolbe	1	Bronze
132+*	900042	O-ring	O-ring	O-Ring	1	
134	937150	Rørstift RF	Pipe pin RF	Spannhülse RF	1	Stainless
136	400983	Kuglering RF	Ball race RF	Lauftring RF	2	Stainless
	941106	Kugle RF	Ball RF	Kugel RF	25	Stainless
137+*	900181	O-ring	O-ring	O-Ring	1	
138+*	908180	Skrabering	Scraper ring	Abstreifring	1	
139	958510	Trykfjeder RF	Pressure spring RF	Druckfeder RF	1	Stainless
140+*	901121	U-manchet	Sleeve	Manschette	1	
141	400171	Stålstift	Steel pin	Stahlstift	1	Stainless
142+	400955	Pumpestempel RF	Pump piston RF	Pumpekolbe RF	1	Stainless
143	400962	Fjederskive RF	Spring cap RF	Druckscheibe RF	1	Stainless
144+	933221	Låsering RF	Circlip RF	Schliessring RF	1	Stainless
145+	400110	Styrering	Guide ring	Gleitring	1	Plastic
146+*	901381	U-manchet	U-sleeve	U-Manchette	1	
147+*	900580	O-ring	O-ring	O-Ring	1	
148+	403506	Topstykke RF	Top section RF	Zylinderkopf RF	1	Stainless
149+*	908351	Skrabering	Wiper seal	Abstreifring	1	
150+	402465	Stempelstang RF	Piston rod RF	Kolbenstange RF	1	Stainless
151	941120	Kugle RF	Ball RF	Kugel RF	1	Stainless
152	400978	Håndtagsaksel RF	Axle f/handle RF	Deichselachse RF	1	Stainless
153+*	905101	Proppakning	Plug gasket	Stopfen	1	Plastic
154	937440	Rørstift RF	Tubular pin RF	Rohrstift, RF	1	Stainless
155+	300065	Pumpehus, RF	Pump housing RF	Pumpengehäuse Kpl. RF	1	Stainless
158+*	900350	O-ring	O-ring	O-Ring	1	
159	402337	Tryklejering nylon	Thrust bearing ring nylon	Drucklager-Ring Nylon	1	Plastic
160	400952	Travers RF	Thrust plate RF	Druckplatte RF	1	Stainless
161	400950	Bøsning RF	Bushing RF	Busche RF	2	Stainless
163	917240	Sætskrue RF	Screw RF	Schraube RF	2	Stainless
164	200129	Håndtag kpl.	Handle cpl.	Deichsel Kpl.	1	Stainless
168	990112	Smørenippel RF	Lubricator nipple RF	Schmiernippel RF	1	Stainless
170	400276	Bøsning	Bushing	Buchse	1	Plastic
171+*	906710	Gummi manchete	Rubber sleeve	Gummi-Manschette	1	
172	958123	Trykfjeder RF	Pressure spring RF	Druckfeder RF	1	Stainless
173	917560	Skrue RF	Screw RF	Schraube RF	1	Stainless
174	941108	Kugle RF	Ball RF	Kugel RF	1	Stainless
176+	401460	Ventilindsats kpl. RF	Valve insert cpl. RF	Ventileinsatz Kpl. RF	1	Stainless

Spare Parts List		The hydraulic unit			09-01-2006	
Pos.	Part no.	Benævnelse	Description	Benennung	Pcs.	Mat. Spec.
180+	935350	Springring	Spring ring	Klemmring	1	Steel (not stainless)
181+*	905121	Kobberskive	Copper washer	Kupferscheibe	1	
182	927040	Sikringsmøtrik	Lock nut	Mutter	1	Stainless
183	927050	Sikringsmøtrik	Lock nut	Gegenmutter	1	Stainless
185+	400090	Pumpecylinder RF	Pump cylinder RF	Pumpenzylinder RF	1	Bronze
186+	905205	Kobberskive	Copper washer	Kupferscheibe	1	
187*	900380	O-ring	O-ring	O-Ring	1	
188	403507	Topstykkebøsning	Top section bushing	Zylinderkopf Buchse	1	Bronze
189	403465	Ventilindsats møtrik	Valve insert nut	Ventileinsatz Mutter	1	Stainless
190	415065	Håndtagstop bag	Top f/ handle, rear	Top für Deichsel, hinter	1	
191	415064	Håndtagstop for	Top for handle, front	Top für Deichsel, vorne	1	
192	415281	Kappe til pumpestempel, RF	Cap for pump piston, stainless	Kappe für Pumpenstempel, RF	1	
193	900292	O-ring	O-ring	O-ring	1	
	890071	1 Liter Aircraft 15 olie	1 Liter Aircraft 15 Oil	1 Liter Aircraft 15 Öl	0,25	
	101002	Pumpe RF u/håndt. Alle +-mærkede dele indgår	Pump RF without handle All parts marked + incl.	Pumpe RF o/Deichsel Alle +gezeichneten teile sind enthalten		
	100043	Pakningssæt kpl. RF Alle *-mærkede dele indgår	Gaskets cpl. RF All parts marked * incl.	Dichtungssatz Kpl. RF Alle *gezeichneten teile sind enthalten		