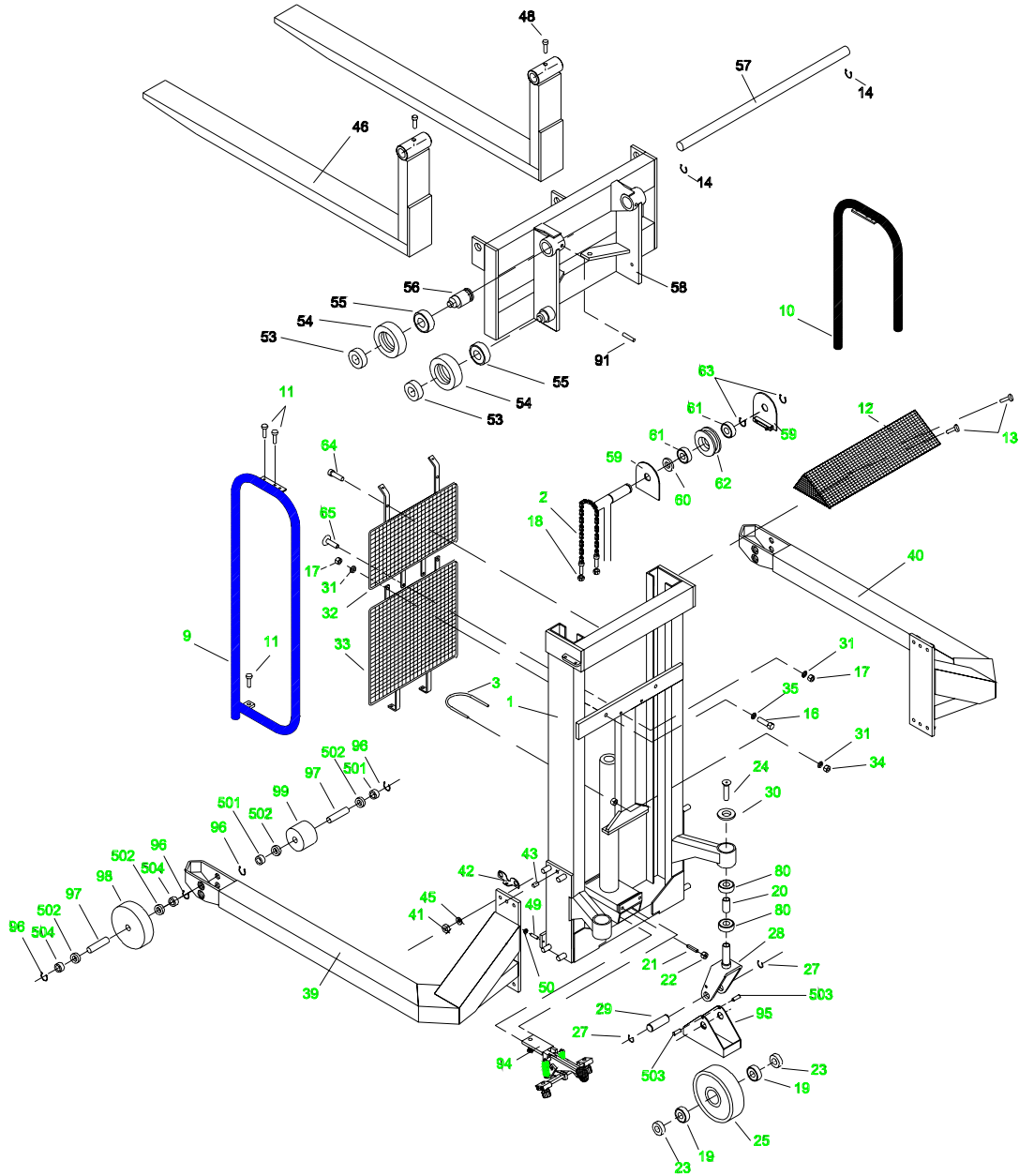


LL 1200M
 231000

| Spare Parts List | | Loglift 1200M Chassis | | | 01.06.2001 | |
|------------------|-------------------------------|--|--|--|---|------|
| Pos. | Part no. | Benevnelse | Description | Benennung | Désignation | Pcs. |
| 1 | 300609 | Chassis | Chassis | Chassis | Chassis | 1 |
| 2 | 401240 | Løftekæde kpl. | Lifting chain cpl. | Hubkette kpl. | Chaîne de levage, complète | 2 |
| 3 | 401924 | Spændebøjle | Clamp | Spannbügel | Etrier de serrage | 1 |
| 4 | 933200 | Låsering | Locking ring | Schließring | Circlip | 4 |
| 5 | 401932 | Hjulaksel | Wheel axle | Radachse | Axe de galet | 2 |
| 6 | 400159 | Afstandsrør | Spacer pipe | Abstandrohr | Tube entretoise | 4 |
| 7 | 946243 | Kugleleje | Ball bearing | Kugellager | Roulement à billes | 4 |
| 8 | 300061L 300063L 300062L | Gaffelhjul, polyurethan m/lejer Gaffelhjul, nylonm/lejer Gaffelhjul, vulkollan m/lejer | Fork wheel, polyurethan w/bearings Fork wheel, nylon w/bearings Fork wheel, vulk. w/bearings | Gabelrolle, polyurethan m/Lager Gabelrolle, Nylon m/Lager Gabelrolle, vulkollan m/ lager | Galet de fourche, polyuréthane a/roulements Galet de fourche, nylon a/roulements Galet de fourche,vulk. a/ roulements | 2 |
| 9 | 401153V | Rørbøjle, venstre | Pipe strap, left | Rohrbügel, links | Etrier de tube, gauche | 1 |
| 10 | 401153H | Rørbøjle, højre | Pipe strap, right | Rohrbügel, rechts | Etrier de tube, droite | 1 |
| 11 | 919816 | Skrue | Screw | Schraube | Vis | 4 |
| 12 | 401241 | Topdæksel | Plastic top cap | Kunststoffschirm | Couvercle de sommet | 1 |
| 13 | 919610 | Skrue | Screw | Schraube | Vis | 2 |
| 16 | 915830 | Sætskrue | Screw | Schraube | Vis | 2 |
| 17 | 921080 | Sikringsmøtrik | Lock nut | Gegenmutter | Ecrou de verrouillage | 4 |
| 18 | 921120 | Sikringsmøtrik | Lock nut | Gegenmutter | Ecrou de verrouillage | 4 |
| 19 | 946253 | Kugleleje | Ball bearing | Kugellager | Roulement à billes | 4 |
| 20 | 400647 | Afstandsrør | Spacer pipe | Abstandrohr | Tube entretoise | 2 |
| 21 | 910030 | Pinoskrue | Pointed screw | Reitstockschrabe | Vis pivot | 2 |
| 22 | 922100 | Møtrik | Nut | Mutter | Ecrou | 2 |
| 23 | 400618 | Afstandsrør | Spacer pipe | Abstandrohr | Tube entretoise | 4 |
| 24 | 911120 | Skrue | Screw | Screw | Vis | 2 |
| 25 | 300060L 300064L | Styrehjul, polyurethan m/lejer Styrehjul, nylon m/lejer | Steering wheel, polyurethan w/bearings Steering wheel, nylon w/bearings | Lenkrolle, polyurethan m/ Lager Lenkrolle, nylon m/Lager | Roue directrice, polyuréthane a/ roulements Roue directrice, nylon a/ roulements | 2 |
| 27 | 933250 | Låsering | Locking ring | Schließring | Circlip | 4 |
| 28 | 400615 | Hjulgaffel | Wheel fork | Radgabel | Etrier de galet | 2 |
| 29 | 401484 | Hjulaksel | Wheel fork | Radachse | Axe de galet | 2 |
| 30 | 400624 | Afdækningskive | Cover disk | Abdecksscheibe | Rondelle couvre-joint | 2 |
| 31 | 924080 | Jernskive | Washer | Scheibe | Rondelle | 6 |
| 32 | 401236 | Øvre gitter | Upper wire guard | Obere Schutzgitter | Grille supérieure | 1 |
| 33 | 401235 | Nedre gitter | Lower wire guard | Untere Schutzgitter | Grille inférieure | 1 |
| 34 | 920080 | Topmøtrik | Top nut | Hubmutter | Ecrou de sommet | 2 |
| 35 | 924085 | Skive | Washer | Scheibe | Rondelle | 2 |
| 50 | 305058-4 | Gaffelkonsol | Fork bracket | Gabelträger | Console de fourche | 1 |
| 53 | 400173 | Nylonrulle | Nylon roll | Nylonrolle | Rouveau en nylon | 4 |
| 54 | 401936 | Mastrulle | Mast roll | Mastrolle | Rouveau de mât | 4 |
| 55 | 946273 | Kugleleje | Ball bearing | Kugellager | Roulement à billes | 4 |
| 56 | 402826 | Excentrisk rulle | Eccentric roll | Exzentrischer Zapfen | Goupille excentrique | 2 |
| 57 | 919610 | Skrue | Screw | Schraube | Vis | 2 |
| 58 | 911825 | Skrue | Screw | Schraube | Vis | 2 |
| 59 | 402263 | Beskyttelses skærm | Cover for chain roller | Schirm für kettenrolle | Ecran protecteur | 4 |
| 60 | 926250 | Stålskive | Washer | Schirm | Rondelle | 2 |
| 61 | 946053 | Kugleleje | Ball bearing | Kugellager | Roulement à billes | 4 |
| 62 | 402325 | Kæderulle | Chain roll | Kettenrolle | Rouveau de chaîne | 2 |
| 63 | 933250 | Låsering | Locking ring | Schließring | Circlip | 4 |
| 80 | 946253 | Kugleleje | Ball bearing | Kugellager | Roulement à billes | 4 |
| 91 | 910012 | Pinoskrue | Pointed screw | Reitstockschrabe | Vis pivot | 4 |
| 92 | 993150 | Dupsko | Plastic cover | Plastik deckel | Embout tampon | 2 |
| 94 | 160030 | Bremse | Brake | Bremse | Frein | 1 |
| 95 | 402763 | Fodbeskytter | Foot protector | Fußschutz | Protection du pied | 1 |
| 96 | 919811 | Skrue | Screw | Schraube | Vis | 4 |

LL 1200MS Chassis

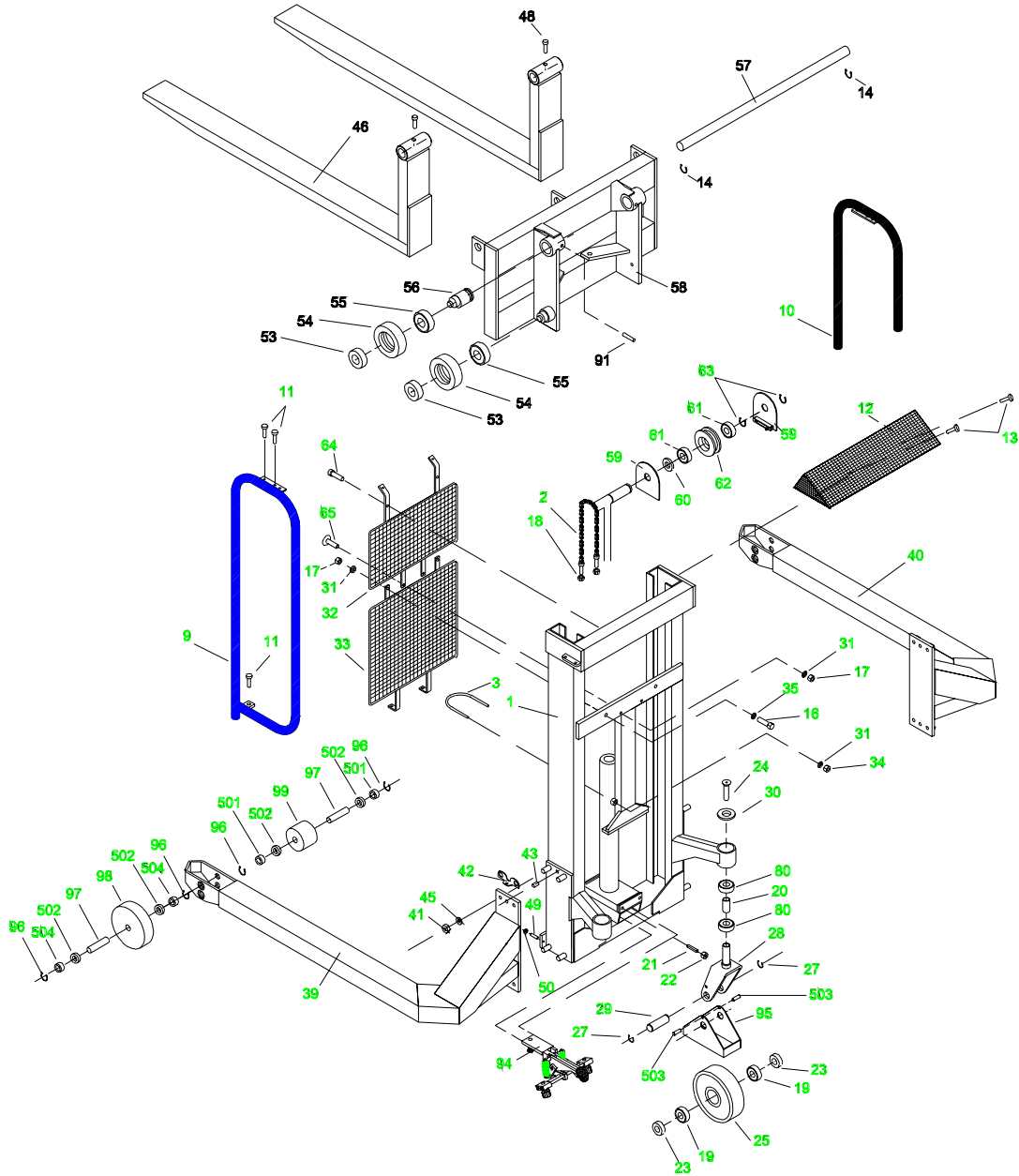
1/2



231000

| Spare Parts List | | Logilift 1200MS Chassis | | | 01.06.2001 | |
|------------------|--|--|--|--|--|------|
| Pos. | Part no. | Benævnelse | Description | Benennung | Désignation | Pcs. |
| 1 | 300607 | Chassis | Chassis | Chassis | Chassis | 1 |
| 2 | 401240 | Løftkæde kpl. | Lifting chain cpl. | Hubkette cpl. | Chaîne de levage, cpl. | 2 |
| 3 | 401924 | Spændebøjle | Clamp | Spannbügel | Etrier de serrage | 1 |
| 9 | 401849V | Rørbøjle, venstre | Pipe strap, left | Rohrbügel, links | Etrier de tube, gauche | 1 |
| 10 | 401849H | Rørbøjle, højre | Pipe strap, right | Rohrbügel, rechts | Etrier de tube, droite | 1 |
| 11 | 919816 | Skrue | Screw | Schraube | Vis | 6 |
| 12 | 401241 | Plast topdæksel | Plastic top cap | Kunststoffschirm | Couvercle du sommet | 1 |
| 13 | 919610 | Skrue | Screw | Schraube | Vis | 2 |
| 14 | 933300 | Låsering | Locking ring | Schließring | Circlip | 2 |
| 16 | 915830 | Sætskrue | Screw | Schraube | Vis de blocage | 2 |
| 17 | 921080 | Sikringsmøtrik | Lock nut | Gegenmutter | Ecrou du sommet | 6 |
| 18 | 921120 | Sikringsmøtrik | Lock nut | Gegenmutter | Ecrou de verrouillage | 4 |
| 19 | 946253 | Kugleleje | Ball bearing | Kugellager | Roulement à billes pour | 4 |
| 20 | 400647 | Afstandsør | Spacer pipe | Abstandrohr | Tube entretoise | 2 |
| 21 | 910030 | Pinolskrue | Pointed screw | Reitstockschrabe | Vis pointue | 2 |
| 22 | 922100 | Møtrik | Nut | Mutter | Ecrou | 2 |
| 23 | 400618 | Afstandsør | Spacer pipe | Abstandrohr | Tube entretoise | 4 |
| 24 | 911120 | Skrue | Screw | Schraube | Vis | 2 |
| 25 | 300046L 300048L | Styrehjul, nylon m/ lejer Styrehjul, polyurethan m/ lejer | Steering wheel, nylon w/ bearings Steering wheel, polyurethane w/ bearings | Lenkrolle, Nylon m/ Lager Lenkrolle, Polyurethane m/ Lager | Roue directrice, nylon a/ roulements Roue directrice, polyuréthane a/ roulements | 2 |
| 27 | 933250 | Låsering | Locking ring | Schließring | Circlip | 4 |
| 28 | 400615 | Hjulgaffel | Wheel fork | Radgabel | Etrier de galet | 2 |
| 29 | 401484 | Hjulaksel | Wheel axle | Radachse | Axe de galet | 2 |
| 30 | 400624 | Afdækningskive | Cover disk | Abdecksscheibe | Rondelle couvre-joint | 2 |
| 31 | 924080 | Jernskive | Washer | Scheibe | Rondelle en fer | 6 |
| 32 | 401236 | Øvre gitter | Upper wire guard | Obere Schutzgitter | Grille supérieure | 1 |
| 33 | 401235 | Nedre gitter | Lower wire guard | Untere Schutzgitter | Grille inférieure | 1 |
| 34 | 920080 | Topmøtrik | Top nut | Hubmutter | Ecrou de sommet | 2 |
| 35 | 924085 | Skive | Washer | Scheibe | Rondelle | 2 |
| 39 | 300868V 300915V 300921V 300869V 300870V 300871V 300872V 300873V | Ben t. skrævestel, venstre 850 Ben t. skrævestel, venstre 915 Ben t. skrævestel, venstre 1016 Ben t. skrævestel, venstre 1067 Ben t. skrævestel, venstre 1118 Ben t. skrævestel, venstre 1168 Ben t. skrævestel, venstre 1220 Ben t. skrævestel, venstre 1250 | Leg f. straddle chass. L850 Leg f. straddle chass. L915 Leg f. straddle chass. L1016 Leg f. straddle chass. L1067 Leg f. straddle chass. L1118 Leg f. straddle chass. L1168 Leg f. straddle chass. L1220 Leg f. straddle chass. L1250 | Bein f. spreizgestell L850 Bein f. spreizgestell R915 Bein f. spreizgestell L1016 Bein f. spreizgestell L1067 Bein f. spreizgestell L1118 Bein f. spreizgestell L1168 Bein f. spreizgestell L1220 Bein f. spreizgestell L1250 | Jambe de bngeron encadant G850 Jambe de bngeron encadant G915 Jambe de bngeron encadant G1016 Jambe de bngeron encadant G1067 Jambe de bngeron encadant G1118 Jambe de bngeron encadant G1168 Jambe de bngeron encadant G1220 Jambe de bngeron encadant G1250 | 1 |
| 40 | 300868H 300915H 300921H 300869H 300870H 300871H 300872H 300873H | Ben t. skrævestel, højre 850 Ben t. skrævestel, højre 915 Ben t. skrævestel, højre 1016 Ben t. skrævestel, højre 1067 Ben t. skrævestel, højre 1118 Ben t. skrævestel, højre 1168 Ben t. skrævestel, højre 1220 Ben t. skrævestel, højre 1250 | Leg f. straddle chass. R850 Leg f. straddle chass. R915 Leg f. straddle chass. R1016 Leg f. straddle chass. R1067 Leg f. straddle chass. R1118 Leg f. straddle chass. R1168 Leg f. straddle chass. R1220 Leg f. straddle chass. R1250 | Bein f. spreizgestell R850 Bein f. spreizgestell R915 Bein f. spreizgestell R1016 Bein f. spreizgestell R1067 Bein f. spreizgestell R1118 Bein f. spreizgestell R1168 Bein f. spreizgestell R1220 Bein f. spreizgestell R1250 | Jambe de bngeron encadant D850 Jambe de bngeron encadant D915 Jambe de bngeron encadant D1016 Jambe de bngeron encadant D1067 Jambe de bngeron encadant D1118 Jambe de bngeron encadant D1168 Jambe de bngeron encadant D1220 Jambe de bngeron encadant D1250 | 1 |
| 41 | 921161 | Låsemøtrik | Lock nut | Gegenmutter | Ecrou de verrouillage | 8 |
| 42 | 401999 | Beslag f. rørbøjle | Fittings f. pipe strap | Beschlag f. Rohrbügel | Ferrure pour étrier | 2 |
| 43 | 932120 | Stålstift | Pin | Stift | Goupille en acier | 2 |
| 45 | 924016 | Jernskive | Washer | Scheibe | Rondelle en fer | 8 |
| 46 | 402463 402391 | Massiv gaffel 1067 Massiv gaffel 1150 | Solid fork 1067 Solid fork 1150 | Massive Gabel 1067 Massive Gabel 1150 | Fourche massif 1067 Fourche massif 1150 | 2 |
| 48 | 915220 | Sætskrue | Screw | Schraube | Vis de blocage | 2 |
| 49 | 910830 | Pinolskrue | Pointed screw | Reitstockschrabe | Vis pivot | 2 |
| 50 | 922080 | Møtrik | Nut | Mutter | Ecrou | 2 |

LL 1200MS Chassis



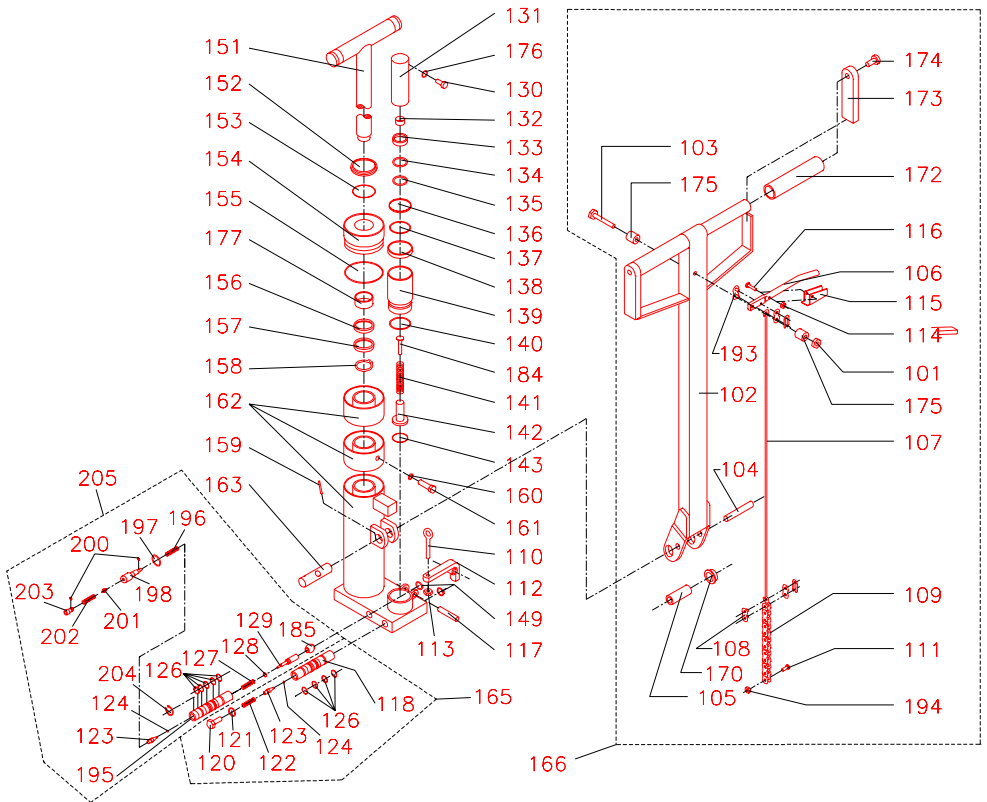
231000

| Spare Parts List | | Logilift 1200MS Chassis | | | 01.06.2001 | |
|------------------|----------|---|---|--|---|------|
| - Continued | | | | | | |
| Pos. | Part no. | Benævnelse | Description | Benennung | Désignation | Pcs. |
| 53 | 400173 | Nylonrulle | Nylon roll | Nylonrolle | Rouleau en nylon | 4 |
| 54 | 401936 | Mastrulle | Mast roll | Mastrolle | Rouleau de mât | 4 |
| 55 | 946273 | Kugleleje | Ball bearing | Kugellager | Roulement à billes | 4 |
| 56 | 402826 | Excentrisk rulle | Eccentric pin | Exzentrischer Zapfen | Goupille excentrique | 2 |
| 57 | 401331 | Forskydningsaksel | Shear axle | Verschiebungssachse | Axe de décalage | 1 |
| 58 | 402857 | Gaffelkonsol, f. variable gaffler | Bracket f. adjustable forks | Träger f. justierbare Gabel | Console de fourche pour fourches variables | 1 |
| 59 | 402263 | Beskyttelses skærm | Cover f. chain roller | Schirm f. Kettenrolle | Ecran protecteur | 4 |
| 60 | 926250 | Stålskive | Washer | Scheibe | Rondelle | 2 |
| 61 | 946053 | Kugleleje | Ball bearing | Kugellager | Roulement à billes | 8 |
| 62 | 402325 | Kæderulle | Chain roll | Kettenrolle | Rouleau de chaîne | 2 |
| 63 | 933250 | Låsering | Locking ring | Schließring | Circlip | 4 |
| 64 | 919610 | Skruer | Screw | Schraube | Vis | 2 |
| 65 | 911825 | Skruer | Screw | Schraube | Vis | 2 |
| 80 | 946253 | Kugleleje | Ball bearing | Kugellager | Roulement à billes | 4 |
| 91 | 910012 | Pinolskruer | Pointed screw | Reitstockschräube | Vis pivot | 4 |
| 94 | 160030 | Bremse | Brake | Bremse | Frein | 1 |
| 95 | 401483 | Fodbeskytter | Foot protector | Fußschutz | Protection du pied | 1 |
| 96 | 933200 | Låsering | Locking ring | Schließring | Circlip | 4 |
| 97 | 402846 | Hjulaksel f/ skræveben | Wheel axle | Radachse | Axe de galet | 2 |
| 98 | 400713L | Styrehjul, nylon m/lejer | Steering wheel, nylon w/bearings | Lenkrolle, Nylon m/Lager | Roue directrice, nylon a/roulements | 2 |
| | 401578L | Styrehjul, poly. m/lejer | Steering wheel, poly. w/bearings | Lenkrolle, Polyurethan m/Lager | Roue directrice, poly. a/roulements | |
| | 400757L | Styrehjul, vulkollan m/lejer | Steering wheel, vulkollan w/bearings | Lenkrolle, Vulkollan m/Lager | Roue directrice, vulkollan a/roulements | |
| | 401096 | Styrehjul, stål | Steering wheel, steel | Lenkrolle, Stahl | Roue directrice, acier | |
| 99 | 402502L | Gaffelhjul, nylon m/lejer | Fork wheel, nylon w/bearings | Gabelrolle, Nylon m/Lager | Galet de fourche, nylon a/roulements | 2 |
| | 402503L | Gaffelhjul, vulkollan m/lejer | Fork wheel, vulkollan w/bearings | Gabelrolle, Vulkollan m/Lager | Galet de fourche, vulkollan a/roulements | |
| | 402504L | Gaffelhjul, polyurethan m/lejer | Fork wheel, polyurethane w/bearings | Gabelrolle, Polyurethan m/Lager | Galet de fourche, poly. a/roulements | |
| | 402505 | Gaffelhjul, stål | Fork wheel, steel | Gabelrolle, Stahl | Galet de fourche, acier | |
| 501 | 400159 | Afstandsror | Spacer pipe | Abstandrohr | Tube entretoise | 4 |
| 502 | 946243 | Kugleleje | Ball bearing | Kugellager | Roulement à bille | 4 |
| 503 | 919811 | Skruer | Screw | Schraube | Vis | 4 |
| 504 | 402868 | Afstandsror f. polyurethan styrehjul | Spacer pipe f. poly. steering wheel | Abstandrohr f. Polyurethane Lenkrolle | Tube entretoise p. polyuréthan roue directrice | 4 |
| | 402869 | Afstandsror f. nylon og vulkollan styrehjul | Spacer pipe f. nylon and vulkollan steering wheel | Abstandrohr f. Nylon und Vulkollan Lenkrolle | Tube entretoise p. nylon et vulkollan roue directrice | |
| | 402870 | Afstandsror f. stål styrehjul | Spacer pipe f. steel steering wheel | Abstandrohr f. Stahl Lenkrolle | Tube entretoise p. acier roue directrice | |

LL 1200M/LL 1200MS

- The hydraulic part

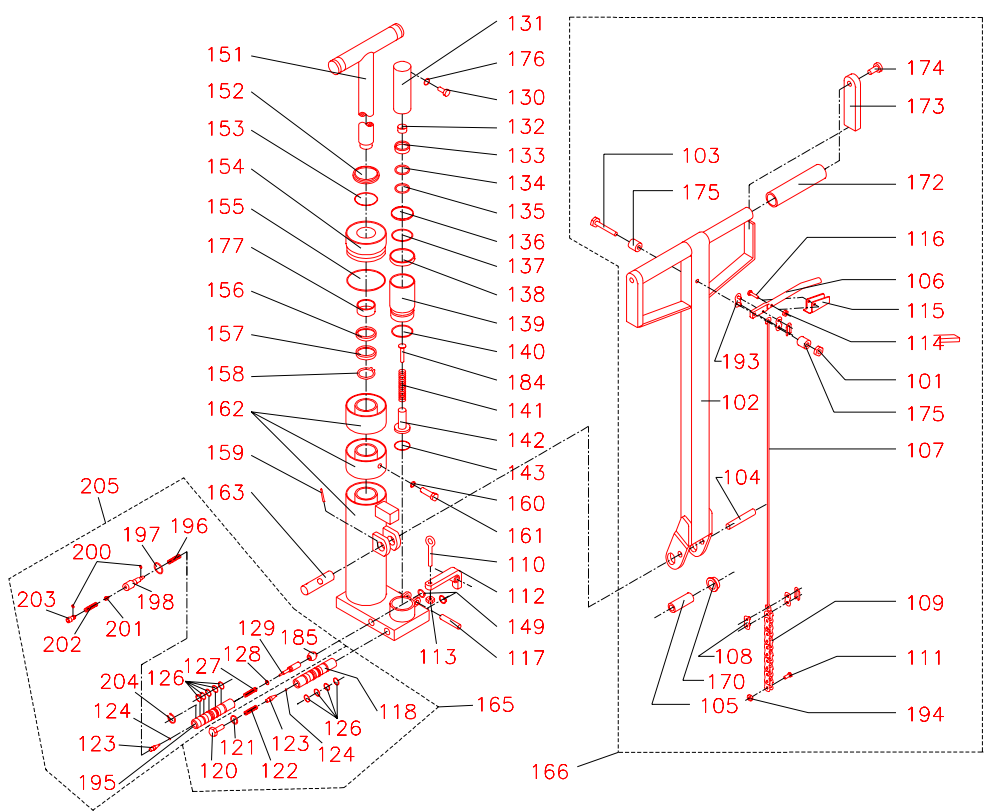
1/2



| Spare Parts List | | Loglift M/MS - The Hydraulic Part | | | 25.08.00 | |
|------------------|----------|-----------------------------------|----------------------|--------------------|----------------------------|------|
| Pos. | Part no. | Benævneelse | Description | Benennung | Désignation | Pcs. |
| 101 | 921060 | Sikringsmøtrik | Lock nut | Gegenmutter | Ecrou de verrouillage | 1 |
| 102 | 200039 | Håndtag | Handle | Deichsel | Timon | 1 |
| 103 | 915635 | Stålbolt | Screw | Schraube | Vis | 1 |
| 104 | 931270 | Rørstift | Tubular pin | Spannhülse | Goupille cylindrique | 1 |
| 105 | 400116 | Rulle | Roller | Rolle | Rouleau | 1 |
| 106 | 400117 | Udløserhåndtag | Release lever | Auslösehandgriff | Manette de décompression | 1 |
| 107 | 400499 | Udløserstang kpl. | Release rod cpl. | Auslösestange kpl. | Tige de décompression cpl. | 1 |
| 108 | 951001 | Kædesamler | Chain connector | Kettensammler | Chaînon d'assemblage | 1 |
| 109 | 951002 | Kæde | Chain | Kette | Chaîne | 1 |
| 110 | 919540 | Øjeskrue | Eye bolt | Augenschraube | Vis à œillet | 1 |
| 111 | 912412 | Skruer | Screw | Schraube | Vis | 1 |
| 112 | 400122 | Udløserarm kpl. | Release arm cpl. | Auslösearm kpl. | Levier de décompression | 1 |
| 113 | 921050 | Sikringsmøtrik | Lock nut | Gegenmutter | Ecrou de verrouillage | 1 |
| 114 | 921050 | Sikringsmøtrik | Lock nut | Gegenmutter | Ecrou de verrouillage | 1 |
| 115 | 400118 | Udløserpal | Release pawl | Auslöseklinke | Cliquet de décompression | 1 |
| 116 | 915522 | Sætskrue | Screw | Schraube | Vis | 1 |
| 117 | 931136 | Rørstift | Tubular pin | Spannhülse | Goupille cylindrique | 1 |
| 118 | 400660 | Ventilindsats | Valve insert | Kassettenventil | Corps de soupape | 1 |
| 120 | 915112 | Sætskrue | Screw | Schraube | Vis | 1 |
| 121 | 905100* | Tætningsring | Gasket ring | Dichtungsring | Anneau d'étanchéité | 1 |
| 122 | 958080 | Trykfjeder | Spring | Feder | Ressort | 1 |
| 123 | 400103 | Udløserkegle | Release cone | Auslösekegel | Cône de décompression | 2 |
| 124 | 941005 | Stålkugle | Steel ball | Stahlkugel | Bille d'acier | 2 |
| 126 | 900110* | 0-ring | 0-ring | 0-Ring | Joint torique | 9 |
| 127 | 958081 | Trykfjeder | Spring | Feder | Ressort | 1 |
| 128 | 900050* | 0-ring | 0-ring | 0-Ring | Joint torique | 1 |
| 129 | 400107 | Udløsertap | Release indicator | Druckstift | Poiteau de décompression | 1 |
| 130 | 916310 | Skruer | Screw | Schraube | Vis | 1 |
| 131 | 400655 | Pumpestempel | Pump piston | Pumpenkolben | Piston de pompe | 1 |
| 132 | 400676* | Føringsbånd | Guide ring | Führungsring | Bague de guidage | 1 |
| 133 | 901203* | U-manchet | Sleeve | Manschette | Manchette | 1 |
| 134 | 400667 | Manchetskive | Sleeve washer | Manschettescheibe | Rondelle d'manchette | 1 |
| 135 | 934300 | Låsering | Locking ring | Schließring | Circlip | 1 |
| 136 | 908350* | Skrabering | Scrapper ring | Abstreifring | Segment racleur | 1 |
| 137 | 900350* | O-ring | 0-ring | O-Ring | Joint torique | 1 |
| 138 | 901351* | U-manchet | Sleeve | Manschette | Manchette | 1 |
| 139 | 400659 | Pumpecylinder | Pump cylinder | Pumpenzylinder | Cylindre de pompe | 1 |
| 140 | 900410* | 0-ring | 0-ring | 0-Ring | Joint torique | 1 |
| 141 | 958141 | Trykfjeder | Spring | Feder | Ressort | 1 |
| 142 | 400657 | Højtrykstempel | High pressure piston | Hochdruckkolben | Piston haute pression | 1 |
| 143 | 900190* | 0-ring | 0-ring | 0-Ring | Joint torique | 1 |
| 149 | 933160 | Låsering | Locking ring | Schließring | Circlip | 2 |
| 151 | 402326 | Stempelstang | Piston rod | Kolbenstange | Bielle de piston | 1 |
| 152 | 908300* | Skrabering | Scrapper ring | Abstreifring | Segment racleur | 1 |
| 153 | 900300* | 0-ring | 0-ring | 0-Ring | Joint torique | 1 |
| 154 | 400487 | Topstykke | Top section | Zylinderkopf | Culasse | 1 |
| 155 | 900670* | 0-ring | 0-ring | 0-Ring | Joint torique | 1 |

LL 1200M/LL 1200MS

- The hydraulic part



| Spare Parts List | | Logilift M/MS - The Hydraulic Part | | | 25.08.99 | |
|--------------------|----------|------------------------------------|--------------------------|--------------------------------|-----------------------------|------|
| <i>- Continued</i> | | | | | | |
| Pos. | Part no. | Benævnelse | Description | Benennung | Désignation | Pcs. |
| 156 | 400454 | Stempel (støbejern) | Piston | Kolben | Piston | 1 |
| 157 | 901381* | U-manchet | Sleeve | Nutring | Manchette | 1 |
| 158 | 933250 | Låsering | Locking ring | Schließring | Circlip | 1 |
| 159 | 931440 | Rørstift | Tubular pin | Spannhülse | Goupille cylindrique | 1 |
| 160 | 905101* | Proppakning | Plug gasket | Stopfen | Bouchon-joint | 1 |
| 161 | 915112 | Sætskrue | Screw | Schraube | Vis | 1 |
| 162 | 300770 | Pumpehus kpl. | Pump house cpl. | Pumpengehäuse kpl. | Corps de pompe compl. | 1 |
| 163 | 400675 | Håndtagsaksel | Lever axle | Handgriffachse | Axe du timon | 1 |
| 165 | 400672 | Ventilindsats kpl. højtryk | High pressure valve cpl. | Kassettenventil kpl. hochdruck | Corps de soupape compl. | 1 |
| 166 | 200139 | Håndtag kpl. | Handle cpl. | Deichsel kpl. | Timon complet | 1 |
| 170 | 400276 | Nylonbøsning | Nylon bushing | Nylon Buchse | Douille | 2 |
| 172 | 400175 | Håndtagsrør | Handle grip black | Handgriffrohr | Tube de poignée | 2 |
| 173 | 400887 | Sideregreb | Side handle orange | Seitengriff | Poignée latérale | 2 |
| 174 | 919624 | Skrue | Screw | Schraube | Vis | 2 |
| 175 | 400119 | Afstandsør | Spacer pipe | Abstandrohr | Tube entretoise | 2 |
| 176 | 905030 * | Tætningsring | Sealing washer | Dichtungsscheibe | Rondelle d'étanchéité | 1 |
| 177 | 401434 | Stopbøsning | Locking bush | Haltebuchse | Douille de butée | 1 |
| 184 | 400679 | Fjederstyr | Spring guide | Feder Führung | Guide de ressort | 1 |
| 185 | 906710* | Gummimanchet | Rubber sleeve | Gumminutring | Manchette en caoutchouc | 1 |
| 193 | 951005 | Kædesamler | Chain connector | Kettensammler | Chaînon d'assemblage | 1 |
| 194 | 921040 | Låsemøtrik | Lock nut | Gegenmutter | Ecrou de verrouillage | 1 |
| 195 | 400002 | Ventilindsats | Valve insert | Kassettenventil | Corps de soupape | 1 |
| 196 | 958071 | Fjeder | Spring | Feder | Ressort | 1 |
| 197 | 905120* | Tætningsring | Gasket ring | Dichtungsring | Anneau d'étanchéité | 1 |
| 198 | 400003 | Ventilforskrning | Valve casing | Ventilverschraubung | Manchon fileté de soupape | 1 |
| 200 | 900042* | O-ring | O-ring | O-Ring | Joint torique | 2 |
| 201 | 403026 | Kegle | Cone | Kegel | Cône | 1 |
| 202 | 958073 | Fjeder | Spring | Feder | Ressort | 1 |
| 203 | 400004 | Ventilregulator | Valve regulator | Ventileinsteller | Régulateur de soupape | 1 |
| 204 | 933160 | Låsering | Locking ring | Schließring | Circlip | 1 |
| 205 | 400083 | Ventilindsats kpl. | Valve insert cpl. | Kassettenventil kpl. | Corps de soupape complet | 1 |
| | 890050 | Hydraulikolie | Special oil | Speziell Öl | Huile hydraulique | 0,8 |
| | 160103 | Pumpe kpl. m/håndtag | Pump cpl. w/handle | Pumpe kpl. m/Deichsel | Pompe complète avec manette | |
| | 160113 | Ombytningspumpe | Exchange pump | Umt. Pumpe | Pompe de rechange | |
| | 160051 | Pakningsæt kpl. | Gasket set cpl. | Dichtungssatz kpl. | Jeu complet de joints | |

Alle * -mærkede dele indgår i pakningsæt kpl.

All parts marked * incl. in gasket set cpl.

Alle *-gezeichneten Teile sind im Dichtungssatz enthalten

Toutes les pièces marquées d'une * sont comprises dans le jeu de joints.